

Public Perception of Environmental Risks – PUBLIC vs EXPERTS



Corina Ilin

West University of Timișoara

2011-2013



- European Project – FP7:
LOW CARBON AT WORK



- **Modelling agents and organisations to achieve transition to a low carbon Europe**
 - Area 6.4.2.3 Interplay to enhance behavioural and societal changes
 - ENV. 2010.4.2.3-1 Foresight to enhance behavioural and societal changes enabling the transition towards sustainable paths in Europe



<http://www.locaw-fp7.com>

Organizații de cercetare

UNIVERSIDADE DA CORUÑA

UNIVERSITATEA DE VEST DIN TIMIȘOARA

UNIVERSITY OF SURREY

UNIVERSITY OF GRONINGEN

UNIVERSITATEA DE CORUÑA

Participanți

Proiectul LOCaw este coordonat de:

Argemiro Alonso Rodriguez (CIC, Spania)

Julian Hopfinger (CIC, Germania)

Muñoz Estanislao (CIC, Spania)

Maria Isabella (CIC, Spania)

Claudia Carina (CIC, Spania)

Enay Chah (CIC, Spania)

Adrian Căstănel (CIC, Spania)

Francisco Pineda (CIC, Spania)

Nicolas Garmy (CIC, Spania)

Rita Gonzalez (CIC, Spania)

Nora Giffels (CIC, Spania)

Carmen de la Cruz (CIC, Spania)

Lucy Jones (CIC, Spania)

João de Melo (CIC, Spania)

Guo Pei (CIC, Spania)

Anna Hultén (CIC, Spania)

Flavia de la Cruz (CIC, Spania)

Lucy Jones (CIC, Spania)

David López (CIC, Spania)

Proiectul LOCaw este coordonat de:

Argemiro Alonso Rodriguez (CIC, Spania)

LOCaw

people research organizations approach objectives contact links

ENG | ITA | ROM | SVE | ESP | GAL

LOCaw will advance our understanding of the drivers of and barriers to sustainable lifestyles by an integrative investigation of everyday practices and behaviours within large scale organizations. The project will analyse:

- the patterns of production and consumption in the workplace with their resulting GHG emissions;
- organizational strategies to reduce emissions and implement EU regulations regarding the greening of their production processes;
- everyday practices and behaviours at work of employees on different levels of decision-making within the organization;
- the relationship between behaviours and practices at work and behaviours and practices outside work;
- the patterns of interaction between relevant agents and stakeholders in the organization's environment and the resulting barriers and drivers for implementing sustainable practices and behaviours in the workplace.

LOCaw will examine large organizations in the public and private sector, including light heavy industry.

LOCaw will be undertaken in six countries: Austria, Spain, Sweden, The Netherlands and the primary team working in the areas of, sociology, geography, business studies, data intelligence.

LOCaw has received funding from the Union FP7 Programme.

LOCaw este un proiect de cercetare care are ca scop să înțeleagă și să reducă emisiile de gaze cu efect de seră din cadrul organizațiilor mari.

Cine este implicat în proiectul LOCaw?

LOCaw este un proiect de cercetare care are ca scop să înțeleagă și să reducă emisiile de gaze cu efect de seră din cadrul organizațiilor mari.

Obiective

Proiectul are ca scop să înțeleagă și să reducă emisiile de gaze cu efect de seră din cadrul organizațiilor mari.

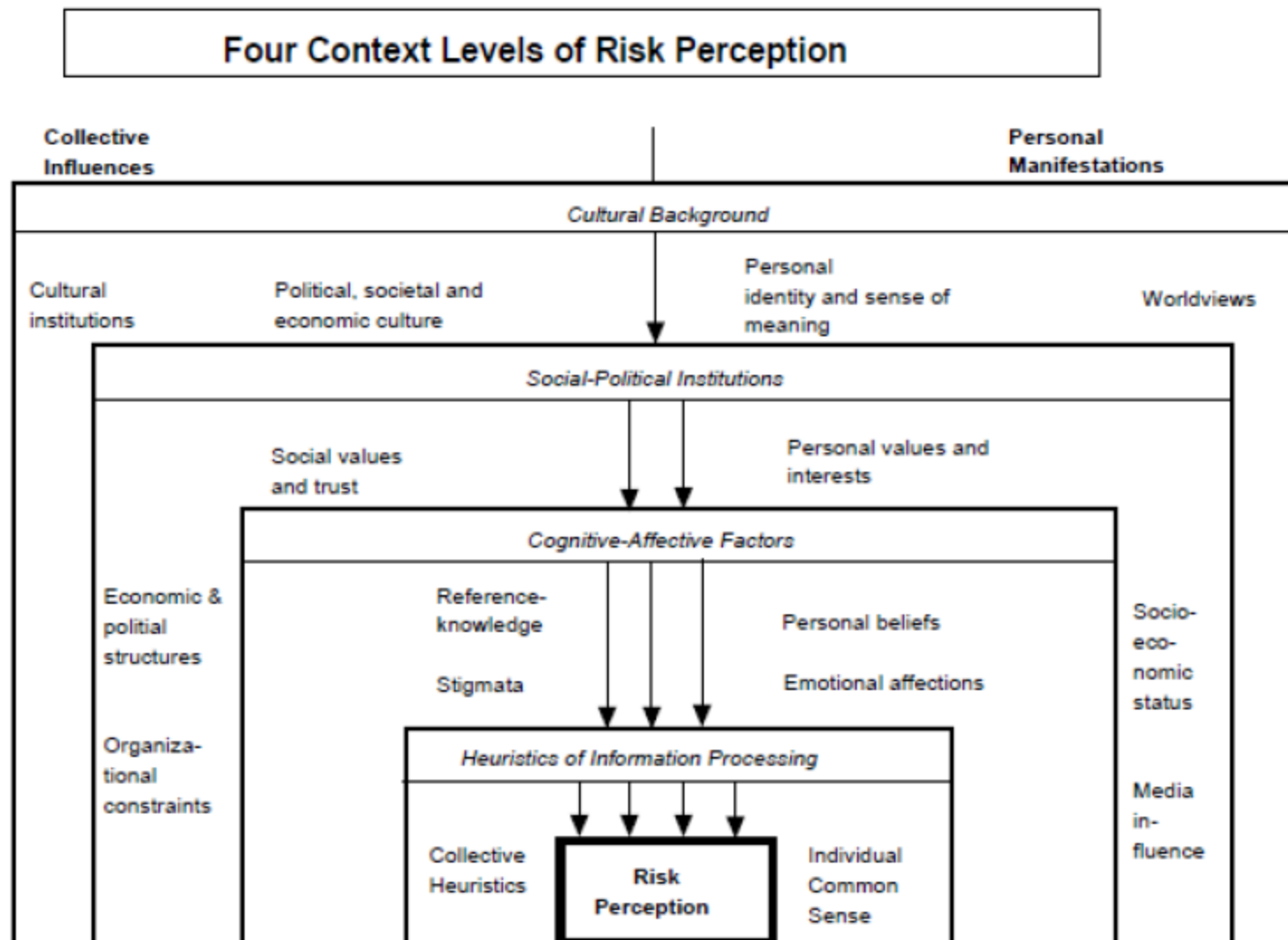
Beneficiari

Proiectul are ca scop să înțeleagă și să reducă emisiile de gaze cu efect de seră din cadrul organizațiilor mari.



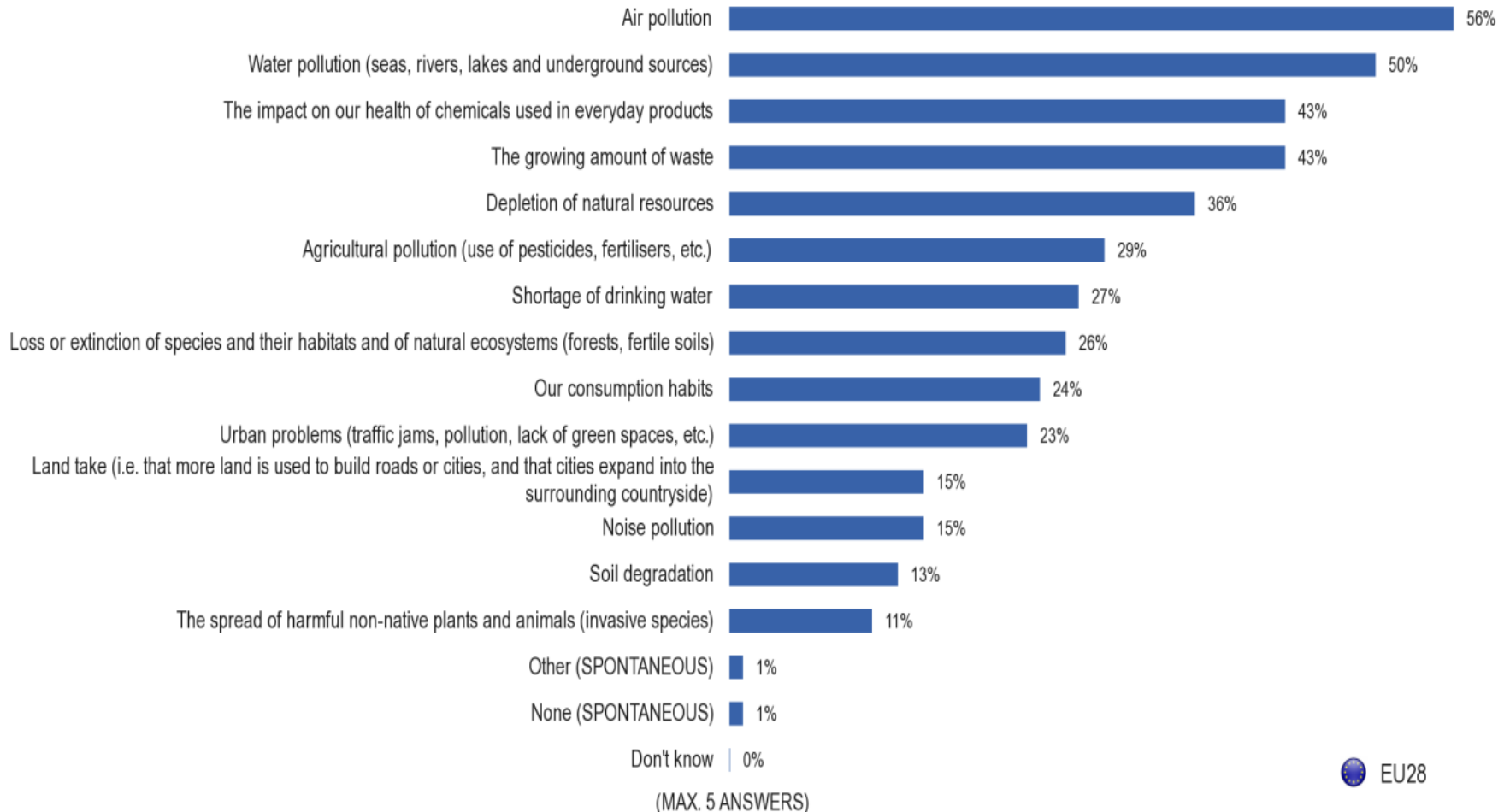
Project title:	Survey on Public Perception of Environmental Risks
Project code:	ENV.F.3/ETU/2014/0037
Contracting organisation:	DG Environment, European Commission
Lead contractor:	Collingwood Environmental Planning Limited Contact: Paula Orr (Project Director) p.orr@cep.co.uk Website: www.cep.co.uk
Partner organisations:	CIRPA - Inter-University Centre for Research in Environmental Psychology, Sapienza University of Rome Contact: Professor Marino Bonaiuto Faculty of Sociology and Psychology, West University of Timișoara Contact: Associate Professor Corina Mirela Ilin Department of Psychology, University of A Coruña Contact: Professor Ricardo García Mira Faculty of Geography and Earth Sciences, University of Latvia Contact: Professor Assistant Iveta Šteinberga Oikos, Development Consulting inc. Contact: Mojca Hrabar
Report details:	Report title: Survey on Public Perceptions of Environmental Risks. Final Report Date issued: 01 December 2015 Author(s): Paula Orr, Katya Brooks, Liza Papadopoulou, Marino Bonaiuto, Giuseppe Carrus, Stefano De Dominicis, Silvia Ariccio, Alexandra Stancu, Corina Ilin, Ricardo García Mira, Helena Martínez, Adina Dumitru, Isabel Lema, Iveta Steinberga, Ieva Strode, Mojca Hrabar and Jurij Kobal. Quality review: Ric Eales (CEP)

Figure 12: Four context levels of risk perception (Renn, 2008)



Eurobarometer 2014

QA2. From the following list, please pick the five main environmental issues that you are worried about.



Eurobarometer 2014

QA2 From the following list, please pick the five main environmental issues that you are worried about. (MAX. 5 ANSWERS)

	Air pollution	Water pollution (seas, rivers, lakes and underground sources)	The growing amount of waste	The impact on our health of chemicals used in everyday products	Depletion of natural resources	Agricultural pollution (use of pesticides, fertilisers, etc.)	Shortage of drinking water	Loss or extinction of species and their habitats and of natural ecosystems (forests, fertile soils)	Our consumption habits	Urban problems (traffic jams, pollution, lack of green spaces, etc.)
EU28	56%	50%	43%	43%	36%	29%	27%	26%	24%	23%
BE	60%	48%	42%	42%	39%	28%	31%	27%	27%	28%
BG	62%	51%	42%	40%	28%	37%	18%	15%	18%	28%
CZ	55%	44%	61%	35%	33%	25%	29%	21%	23%	26%
DK	57%	57%	41%	53%	40%	30%	45%	29%	30%	24%
DE	49%	54%	45%	51%	40%	35%	22%	37%	30%	19%
EE	47%	47%	52%	48%	31%	29%	14%	24%	31%	28%
IE	47%	57%	53%	44%	28%	24%	31%	19%	18%	27%
EL	59%	64%	36%	55%	35%	42%	35%	23%	19%	24%
ES	58%	57%	30%	40%	45%	33%	41%	23%	19%	20%
FR	58%	52%	41%	51%	47%	35%	33%	29%	28%	19%
HR	58%	48%	55%	39%	29%	35%	37%	12%	26%	14%
IT	56%	51%	40%	41%	33%	31%	19%	18%	25%	29%
CY	61%	58%	34%	58%	31%	36%	55%	23%	19%	28%
LV	49%	61%	53%	53%	25%	30%	13%	18%	14%	20%
LT	64%	53%	54%	63%	19%	25%	11%	11%	21%	26%
LU	57%	56%	41%	42%	40%	26%	35%	23%	24%	22%
HU	68%	49%	59%	30%	33%	29%	33%	13%	19%	19%
MT	65%	40%	45%	35%	15%	26%	30%	17%	14%	46%
NL	54%	57%	32%	48%	52%	23%	29%	38%	41%	25%
AT	53%	52%	49%	44%	40%	30%	26%	29%	24%	21%
PL	56%	37%	54%	32%	24%	19%	22%	13%	15%	22%
PT	66%	51%	48%	26%	36%	22%	48%	14%	15%	14%
RO	60%	45%	37%	33%	24%	24%	26%	14%	18%	17%
SI	60%	49%	49%	42%	27%	40%	39%	17%	23%	12%
SK	53%	48%	55%	41%	30%	23%	47%	19%	20%	20%
FI	66%	67%	57%	38%	46%	16%	24%	20%	31%	20%
SE	60%	64%	34%	61%	38%	28%	41%	50%	42%	13%
UK	52%	39%	48%	34%	29%	19%	18%	30%	16%	31%

Highest percentage per country

Lowest percentage per country

Highest percentage per item

Lowest percentage per item

Figure A: Expert assessment of environmental risks overall

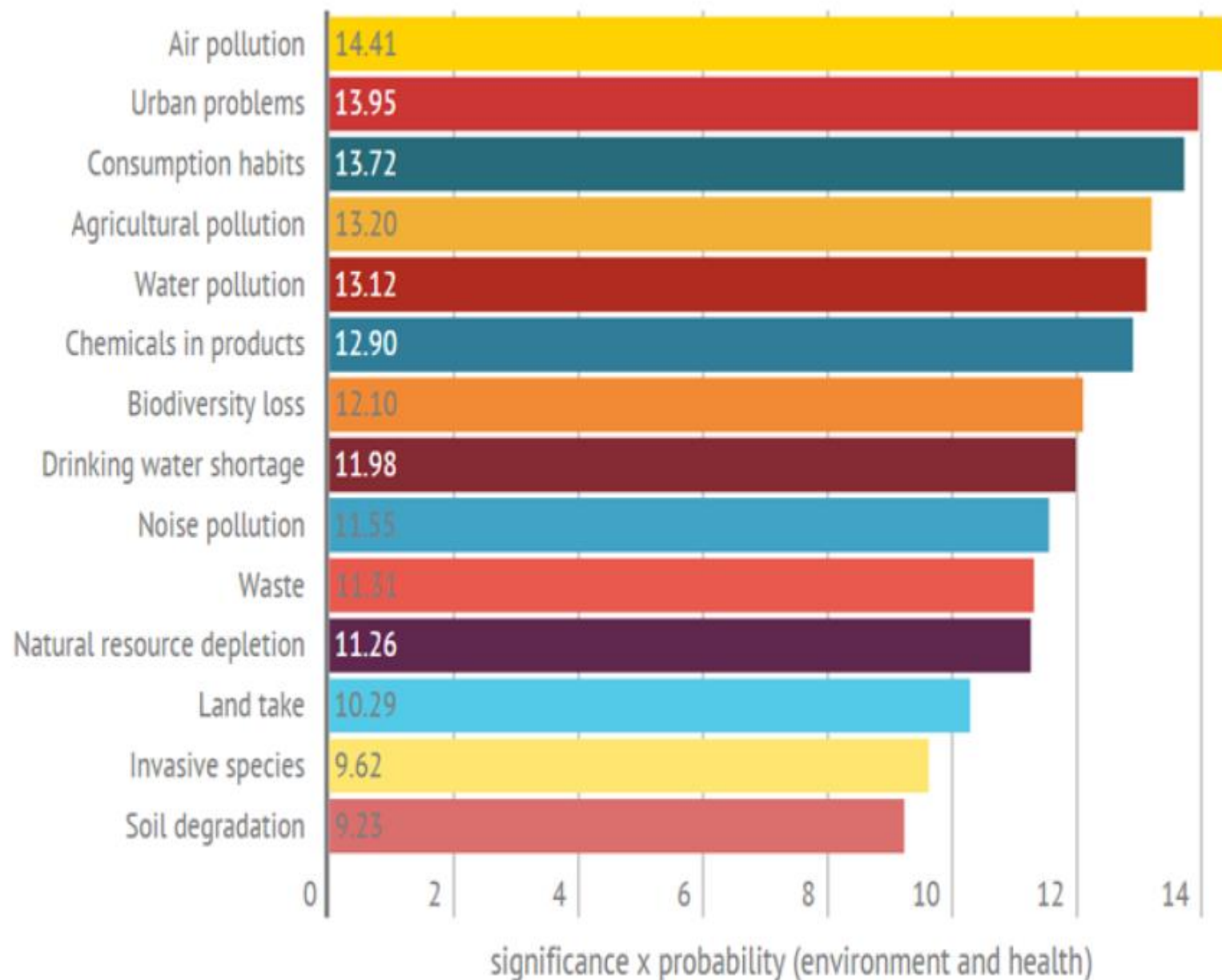


Figure 5: Expert assessment of environmental risks overall on a Cartesian coordinate system (Horizontal axis: assessment of environmental impacts, Vertical axis: assessment of health impacts)

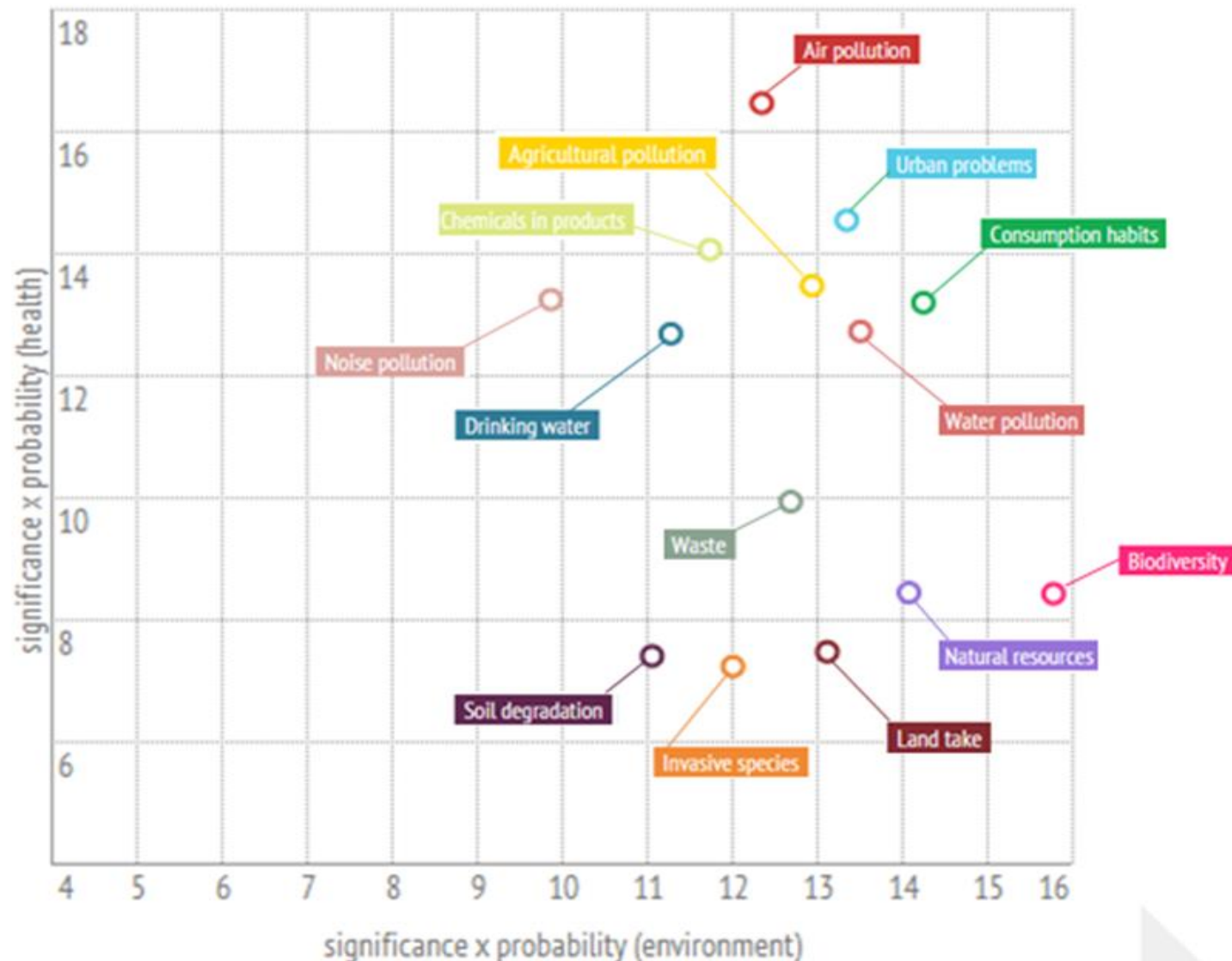


Figure 6: Expert assessment of risks in terms of significance and probability of environmental (left) and health (right) impacts

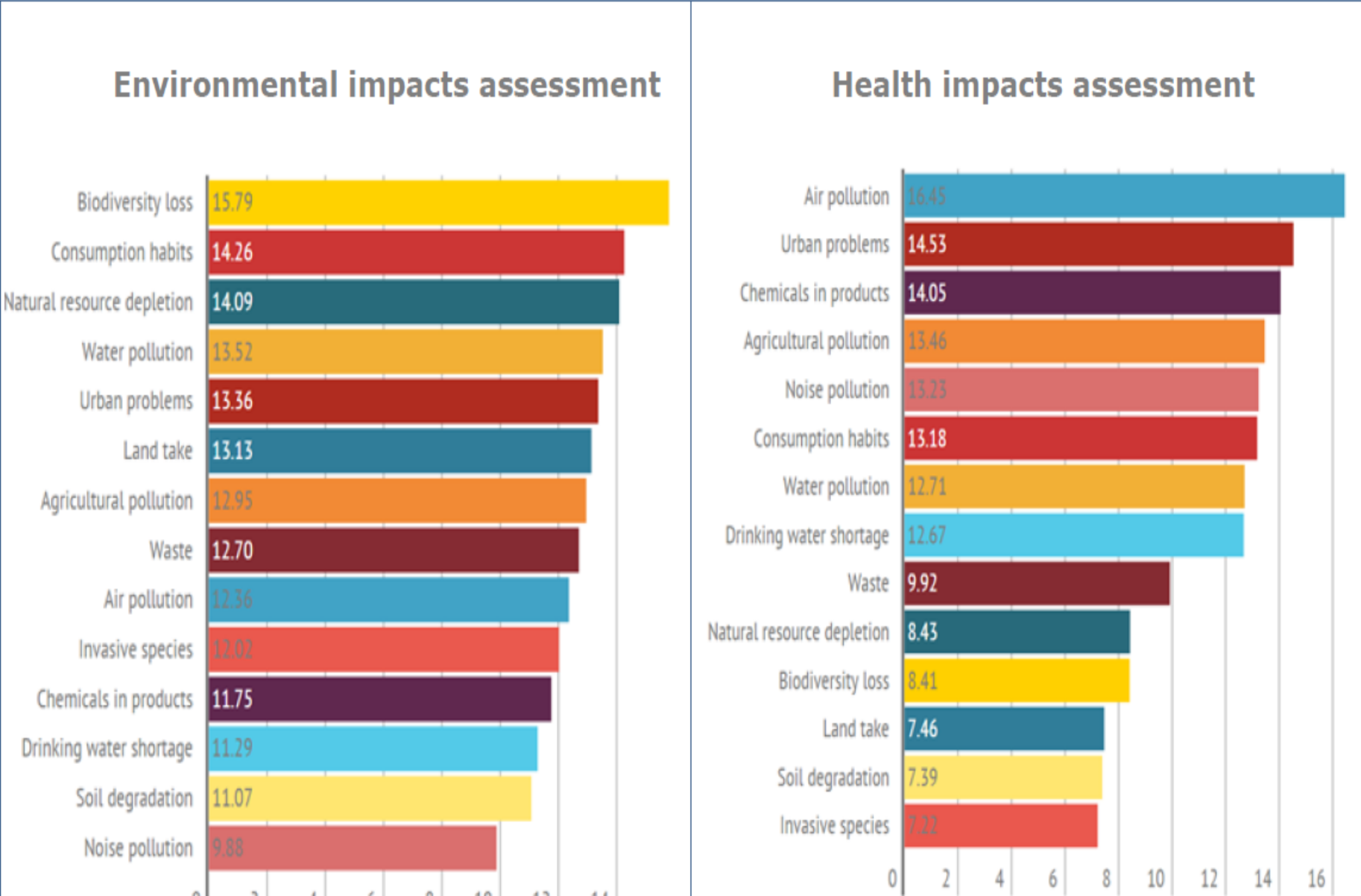


Figure B: Comparison of ranking of environmental risks by experts and members of the public (both Eurobarometer and the project focus groups)
Ranking: 14 (highest) - 1 (lowest)

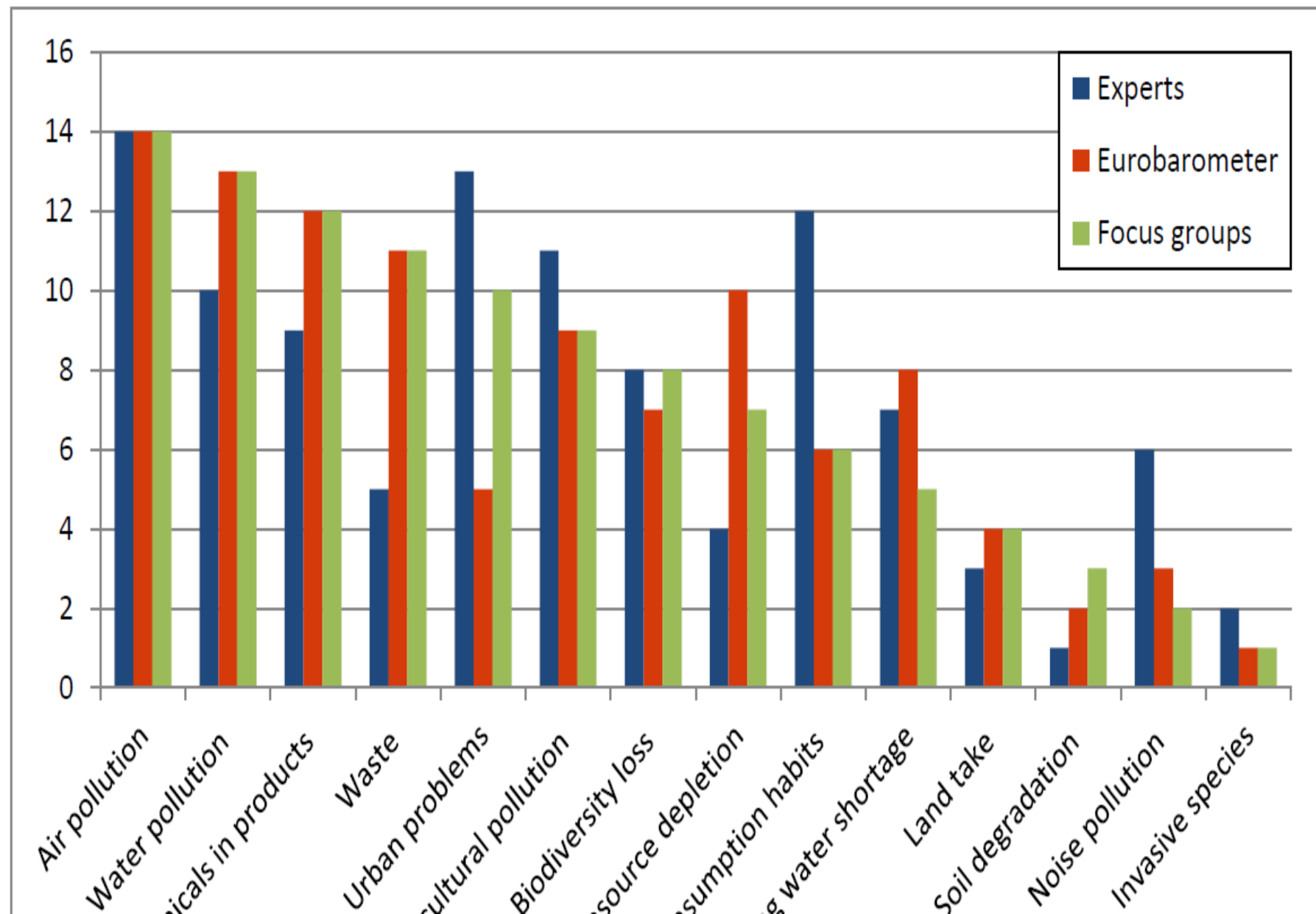
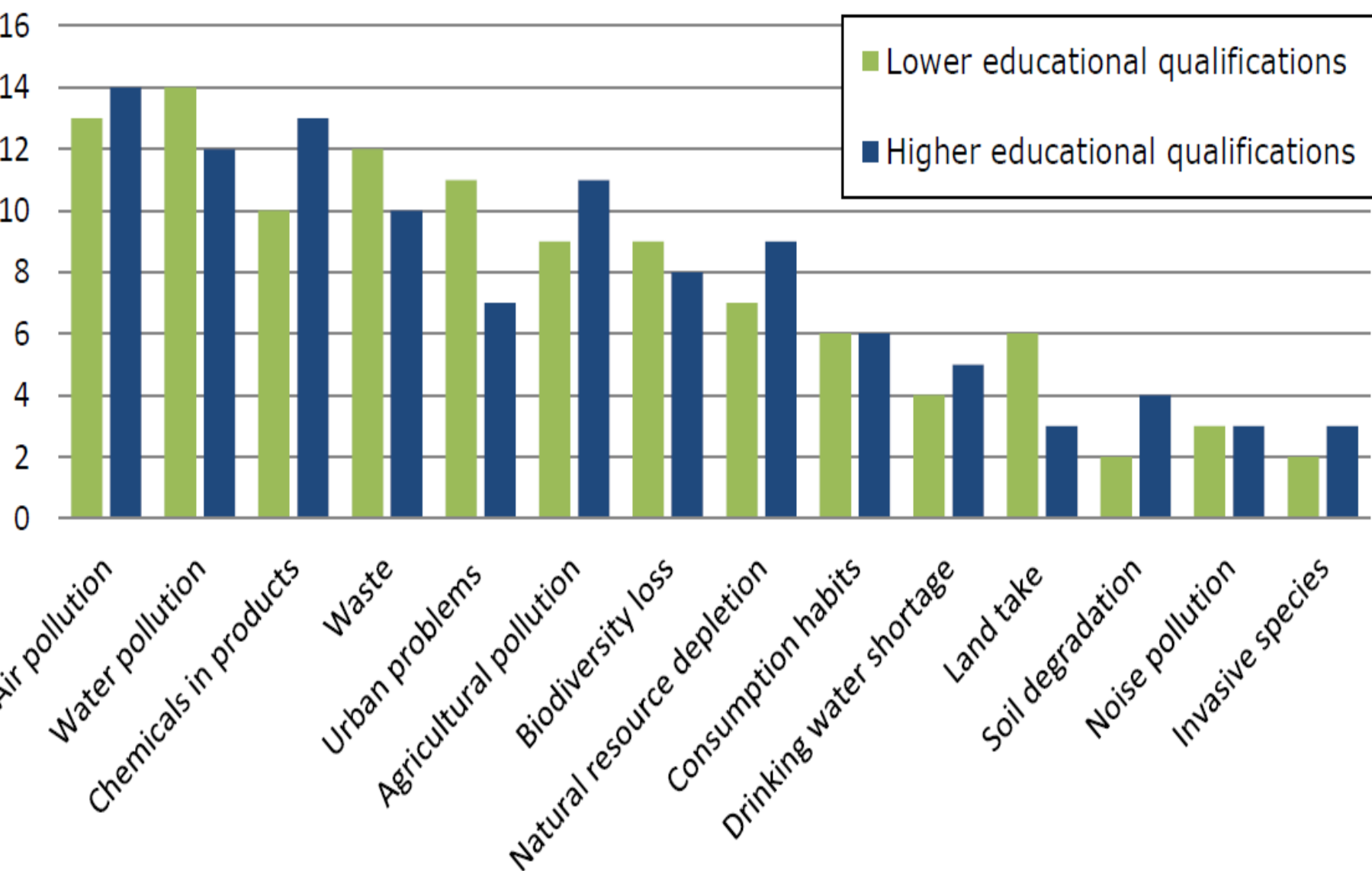




Figure 9: Comparison of environmental risk ranking by educational level



Source: Total (All 108 participants), Lower educational qualifications (58 participants), Higher educational qualifications (50 participants)

Figure 10: Comparison of countries' prioritisation of environmental risks (in number of total responses)

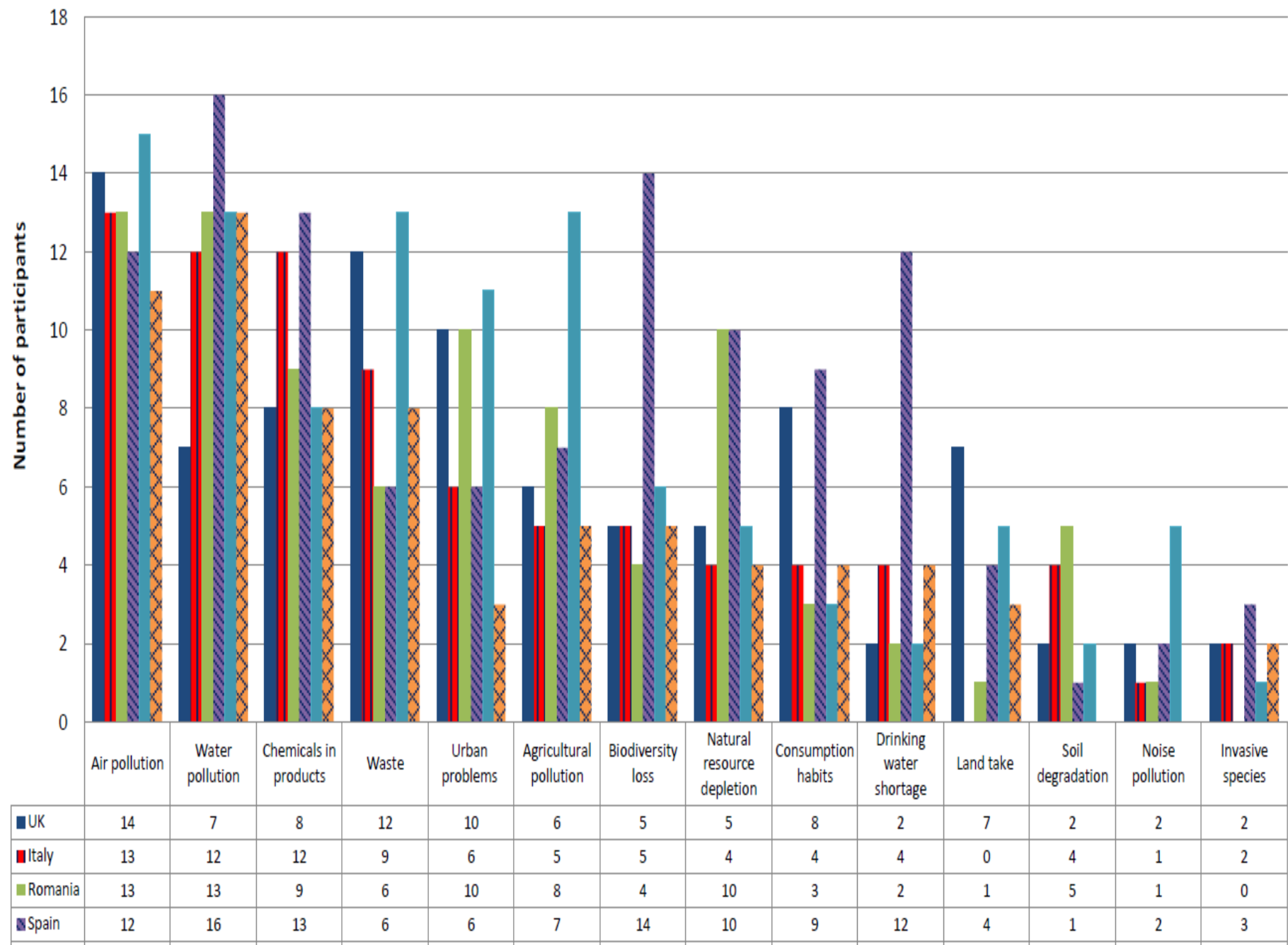


Figure 11: Comparison of ranking of environmental risks by type of respondent.
Ranking: 14 (highest) - 1 (lowest)

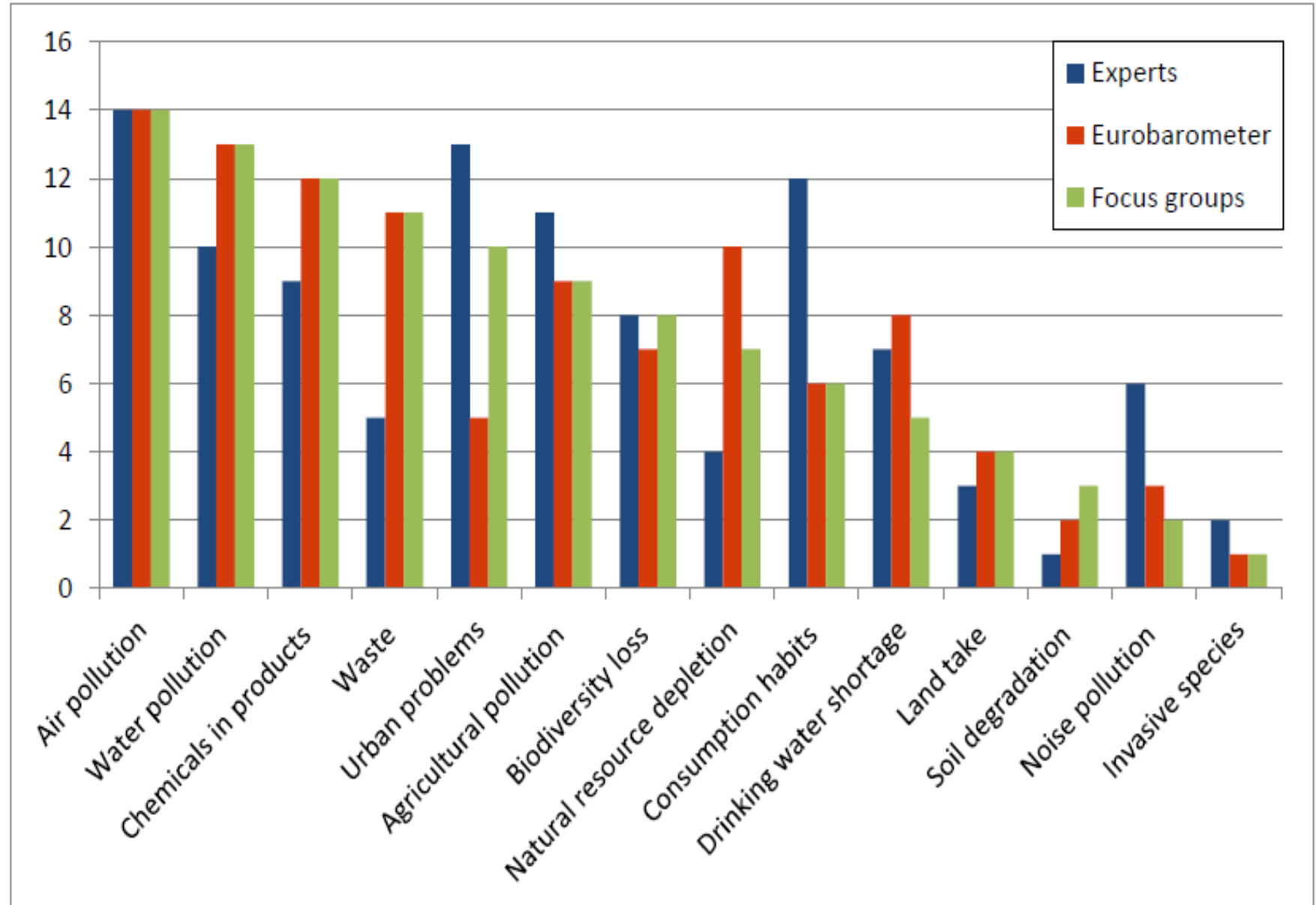


Table 8: Comparison of environmental risk concern across partner countries

Environmental Risk	UK	Italy	Romania	Spain	Latvia	Slovenia
Air pollution	High priority	High priority	High priority	Medium priority	High priority	High priority
Water pollution	Medium priority	High priority	High priority	High priority	High priority	High priority
Chemicals in products	Medium priority	High priority	Medium priority	High priority	Medium priority	High priority
Waste	High priority	High priority	Medium priority	Low priority	High priority	High priority
Urban problems	High priority	High priority	High priority	Low priority	Medium priority	Medium priority
Agricultural pollution	Medium priority	Medium priority	Medium priority	Low priority	High priority	Medium priority
Biodiversity loss	Low priority	Medium priority	Low priority	High priority	Medium priority	Medium priority
Natural resource depletion	Low priority	Medium priority	High priority	Medium priority	Low priority	Medium priority
Consumption habits	Medium priority	Medium priority	Low priority	Low priority	Low priority	Medium priority
Drinking water shortage	Low priority	Medium priority	Low priority	High priority	Low priority	Medium priority
Land take	Medium priority	Low priority	Low priority	Low priority	Low priority	Medium priority
Soil degradation	Low priority	Medium priority	Low priority	Low priority	Low priority	Low priority
Noise pollution	Low priority	Low priority	Low priority	Low priority	Low priority	Low priority
Invasive species	Low priority	Low priority	Low priority	Low priority	Low priority	Low priority

Key

- High priority
- Medium priority
- Low priority

Bibliography

- Holman, A., Boncu, Șt. (2015). Riscul environmental în volumul coordonat de Havârneanu, C. & Havârneanu, G. *Psihologia riscului*, Editura Polirom, Iași
- Orr, P., Brooks, K., Papadopoulou, L., Bonaiuto, M., Carrus, G., De Dominicis, S., Ariccio, S., Stancu, A., Ilin, C., Garcia Mira, R., Martínez, H., Dumitru, A., Lema, I., Steinberga, I., Strode, I., Hrabar, M. and Kobal, J. (2015) [Survey on Public Perceptions of Environmental Risks](http://dx.doi.org/10.2779/419439). Project code ENV.F.3/ETU/2014/0037 for the European Commission's Environment Directorate-General. Luxembourg: European Union. ISBN 978-92-79-54020-2
<http://dx.doi.org/10.2779/419439>



Thank you!

Conf. univ. dr. Corina Ilin

corina.ilin@e-uvt.ro

